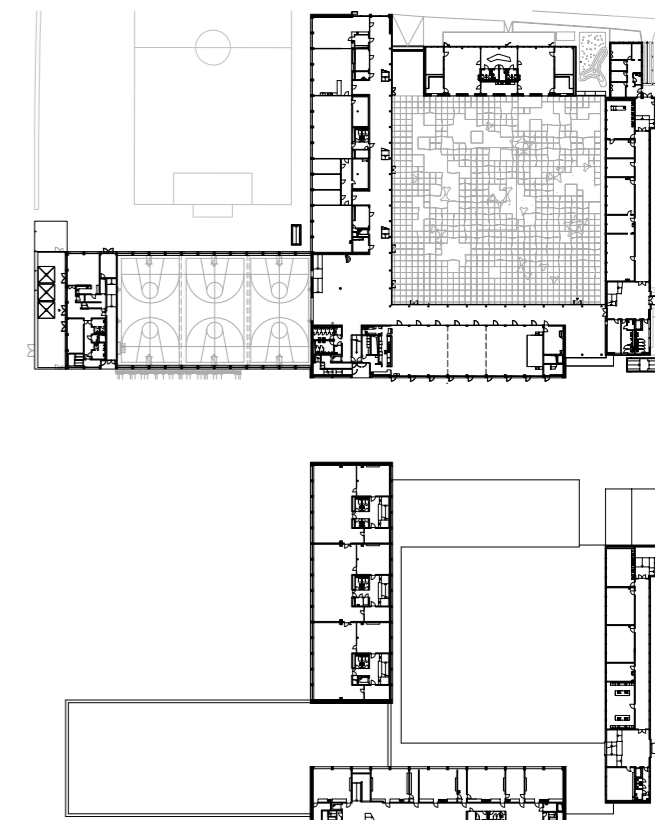


Project SECONDARY SCHOOL SANDGRUBEN
Basel Architects Stücheli Architekten
Address Schwarzwaldallee 161, Basel,
Switzerland Client Canton of Basel-City
Completion 2016 Size 15,500 m² Ages 12–15

a



b



c

Completed in 2016, the Sandgruben school building for around 550 students is the largest high school location in the Canton of Basel-City. It was used for the implementation of a new concept of so-called learning studios, a cluster of input rooms, group rooms and studios with personal desks. The T-shaped new building creates a large schoolyard in combination with the old building that was renovated in 2017. As the "core" of the new school, the main hall is situated at the intersection of the three new building wings where all paths cross on a mosaic carpet of the artist duo Claudia and Julia Müller. The color scheme of the robust materials is neutral with a few selected color accents. The building provides a solid framework that is flexible enough to develop along with the pedagogical needs.

d
View of the schoolyard
e
View From above of the main hall

de



f
View of the assembly hall and canteen on the ground floor

f



g
View of the entrance hall with the extensive corridor

g

