

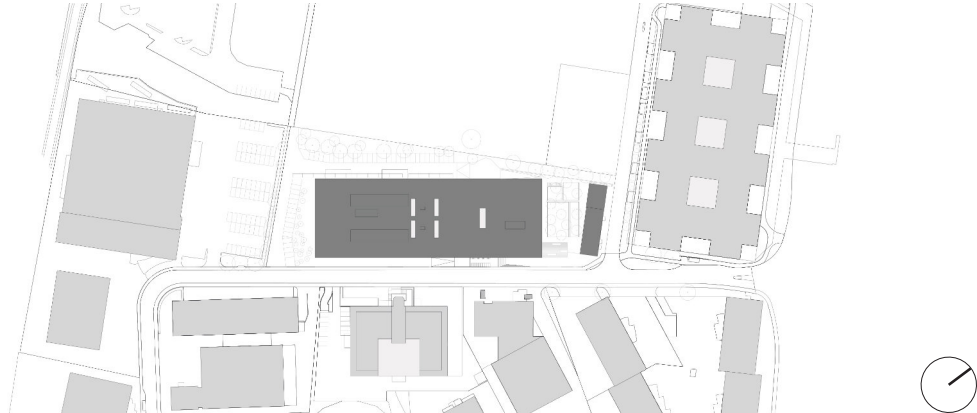
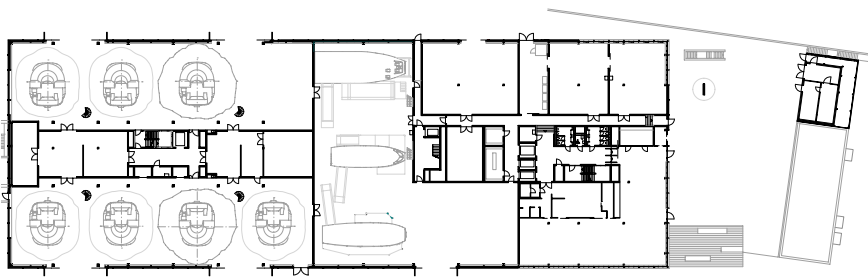
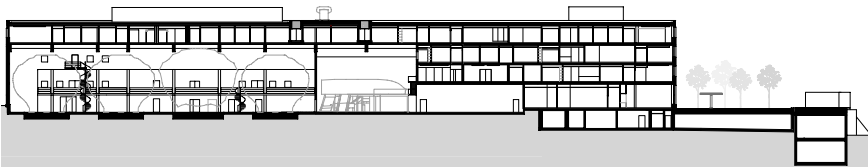
New building

Lufthansa Aviation Training Switzerland, Opfikon

STÜCHELI



Images: perspective with access stairs, entrance, staircase, flight simulators  
Plans: longitudinal section through the flight simulator hall, Ground floor



The Lufthansa Aviation Training Center is the most prominent flight training centre in the country. The whole infrastructure will be united under one roof for the first time at the newly-built site in Opfikon. The building stretches approximately 120 m along Cherstrasse, with a slope of around 5.5 m. The simulators, weighing around 15 tonnes, are kept in the south-west half of the building, which is higher up the slope. The rest of the ground floor houses, among other things, dummy fuselages, workshops and a cafeteria with a terrace and a broad flight of outdoor steps. The building is accessed via a glass lobby that is connected to the upper floors via lifts.

The pilots begin and end their training in the briefing cabins on the top floor. This is the only floor that spans the whole area of the building, and also houses general training and office spaces. The second floor is home to the management and the assessment centre, and the first floor provides specialised spaces for training flight attendants.

The building has a concrete skeleton, and its materials and detailing reference the world of aviation, elevating the prestigious structure to more than just a functional building.

Type of commission: general planner selection process  
Client: Lufthansa Aviation Training Switzerland  
Location: Cherstrasse 1, 8152 Opfikon  
Budget in CHF (BKP 2): 40 Mio.  
SIA 102: 53.5 %  
Gross floor area: 18500 m<sup>2</sup>  
Room plan: two halls for four flight simulators each, with the necessary technical rooms and workspaces, a hall for dummy aeroplanes, service trainers and an emergency obstacle course for training crew personnel, workshops, catering facilities, open-plan offices, and training, meeting, briefing and focus rooms  
Planning phase: April 2016 — October 2017  
Construction phase: October 2017 — August 2019

Architecture: Stücheli Architekten, Zurich  
General management: S+B Baumanagement, Winterthur  
Structural Engineering: Basler & Hofmann, Zurich  
Façade planning: Bardak Planungsbüro, Schaffhausen  
HVAC Engineering: Polke, Ziege, von Moos, Zurich  
Electrical Engineering: HHM, Zurich  
Building physics: Kopitsis Bauphysik, Wohlen  
Landscape: Müller Illien, Zurich