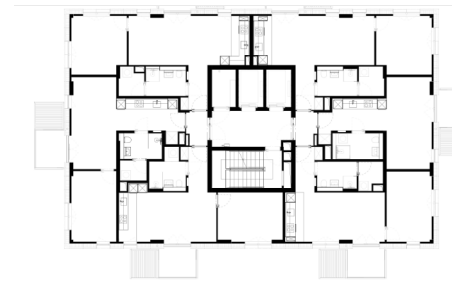
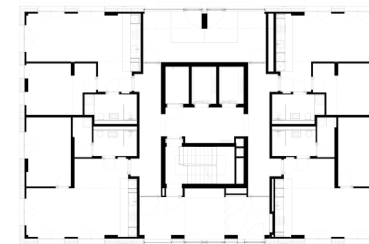
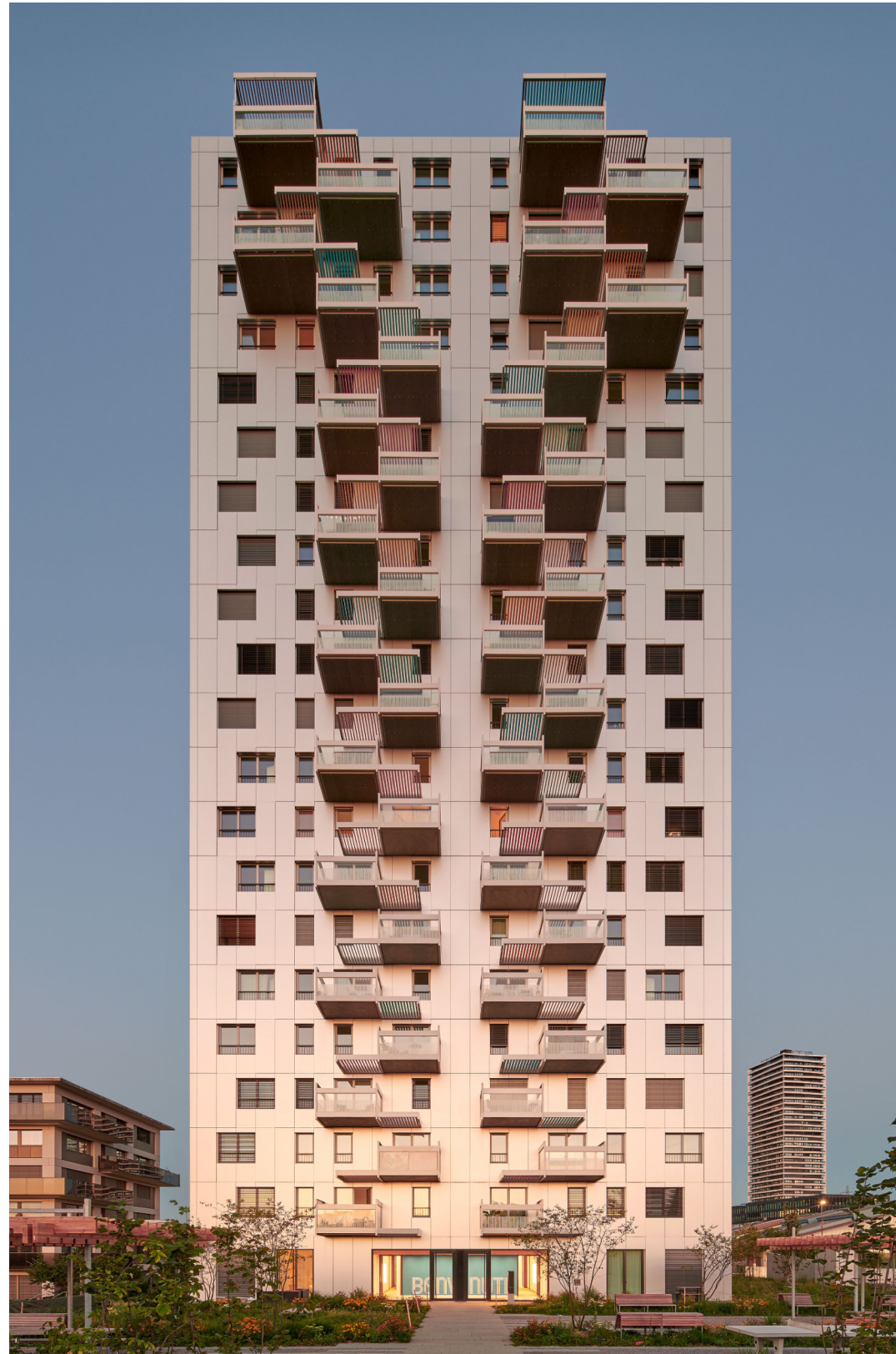


New buildig

Sorrento high-rise apartments, Dübendorf

STÜCHELI



The Hochbord area, once characterized by industrial areas and market gardens, is being transformed into an urban quarter on the border with the city of Zurich. Housing estates, commercial buildings and school facilities will lead to a high building density in the future. The new high-rise residential building stands in a strip-shaped open space that connects the residential areas of several adjoining sites.

The building radiates great elegance through its materiality. The outer shell of anodized aluminum impresses with its simplicity and underlines the sculptural qualities of the building with its precise construction. In addition, the free-floating balconies and their shaded roofs made of colorful metal slats characterize the expression of the building.

The entrance floor is permeable and accessible both from the neighborhood street to the east and from the slow traffic axis to the west, which runs alongside the railroad tracks. The "Sorrento", whose name is reminiscent of an equally bright hotel building in Miami Beach, is home to apartments from the first floor to the 20th floor. The 116 compact rental apartments are aimed at a young clientele. In contrast to the restrained design of the apartments, the semi-public circulation areas are characterized by a bold color scheme typical of 1950s Miami or the pop art that emerged at the time. An expansive canopy and an entrance hall characterized by colorful patterns and mirrors welcome the residents..

Type of contract: Study contract, 1st rank  
Client: Mettler Entwickler AG, St. Gallen  
Location: Am Stadtrand 43, Dübendorf  
Floor area: 11 080 m<sup>2</sup>  
Room program: 116 apartments  
Planning: June 2019 - October 2021  
Realization: May 2022 - May 2024  
Sustainability: SNBS - Swiss Sustainable Building Standard  
Minergie-P

Photo Studio Willen: West side view with cantilevered balconies, main entrance, entrance hall on the west side, entrance area with a canopy, and the staircase.  
Drawings: site plan, ground floor plan, and first floor plan.

Architecture: Stücheli Architects, Zurich  
Landscape: Landscape architecture Haag, Zurich